

Syringe plunger contamination by hazardous drugs: A comparative study

Stephen T Smith and Mark C Szlaczký

J Oncol Pharm Pract published online 5 March 2014

DOI: 10.1177/1078155214526428

The online version of this article can be found at:

<http://opp.sagepub.com/content/early/2014/03/05/1078155214526428>

Published by:



<http://www.sagepublications.com>

Additional services and information for *Journal of Oncology Pharmacy Practice* can be found at:

Email Alerts: <http://opp.sagepub.com/cgi/alerts>

Subscriptions: <http://opp.sagepub.com/subscriptions>

Reprints: <http://www.sagepub.com/journalsReprints.nav>

Permissions: <http://www.sagepub.com/journalsPermissions.nav>

>> [OnlineFirst Version of Record](#) - Mar 5, 2014

[What is This?](#)

Syringe plunger contamination by hazardous drugs: A comparative study

Stephen T Smith and Mark C Szlaczký

J Oncol Pharm Practice

0(0) 1–5

© The Author(s) 2014

Reprints and permissions:

sagepub.co.uk/journalsPermissions.nav

DOI: 10.1177/1078155214526428

opp.sagepub.com



Abstract

Aim: The purpose of this study was to perform a comparative cyclophosphamide contamination level test with Becton Dickinson® syringe plungers with Phaseal® Closed System Transfer Devices and Equashield® syringe plungers under routine oncological compounding conditions.

Method: The ChemoGlo™ sampling kit and analysis services were used to test for cyclophosphamide contamination levels on the syringe plungers of Becton Dickinson® Phaseal and Equashield® syringes that underwent cycles of drug transfer in a Forma Class II, 2A Biological Safety Cabinet. Prior to testing, the syringes were divided into three equal groups for the Equashield® and Becton Dickinson® syringes. A 50 mL aliquot of cyclophosphamide was drawn into each syringe and then injected back into the cyclophosphamide vial. This drug transfer procedure was immediately repeated twice for the syringes in group 1, four times for group 2, and eight times for group 3. After the completion of the drug transfers with the Equashield® and Becton Dickinson® Phaseal syringes, the plungers were retracted back to the nominal syringe marking, and a wipe test of the exposed plunger was done using the ChemoGlo™ sampling kit.

Results: Significant contamination levels of 2000 ng and greater were detected on most Becton Dickinson® syringe plungers with Phaseal® Closed System Transfer Devices, whereas all Equashield® syringes remained uncontaminated at undetectable levels.

Keywords

Closed-system transfer devices, chemotherapy exposure, chemotherapy compounding

Introduction

Our institution administers thousands of monthly chemotherapy doses, so we were very early adopters of both USP797¹ and NIOSH recommendations.² We had developed and implemented policies and procedures outlining safe and appropriate procedures for handling oncological agents, the utilization of clean-rooms and biological safety cabinets, personal protective equipment (PPE), and many other protective measures. Those policies and procedures included the utilization of the Phaseal® Closed System Transfer Devices (CSTD) with Becton Dickinson (BD) syringes. Three years ago, we replaced the Phaseal® devices with a new CSTD, Equashield®. The design, simplicity, ergonomics, and the potential for decreasing our hazardous waste we felt offered an advantage over the BD Phaseal® products.

Favier et al.,³ in a peer-reviewed study, examined the potential for syringe plunger contamination during routine drug preparations at hospital pharmacies.

This study confirmed and quantitated that considerable contamination from cyclophosphamide did occur on the BD® syringe plungers. This study included wipe test sampling of syringe plungers from syringes that were purposely operated with repeated withdrawal and re-injection cycles of cyclophosphamide to simulate repeated use. The study also performed wipe test sampling of syringes collected after normal use during a pharmacy routine work day. Both groups of syringe samples were found to be contaminated. This previously undetected route of exposure poses a problem as it has identified another potential source of contamination of gloves and the work environment, which increases the risk of exposure to the pharmacy staff, nurses, patients, and their families.

Karmanos Cancer Center, Detroit, MI, USA

Corresponding author:

Stephen T Smith, Department of Pharmacy, Karmanos Cancer Center, 4100 John R. Street, Mailcode: WE01PH, Detroit, MI 48201, USA.

Email: smithste@karmanos.org

A few years later, a research laboratory specializing in antineoplastic agents and environmental contamination repeated the plunger contamination study.⁴ This study included Equashield[®] syringes in addition to BD[®] and Terumo[®] syringes. This study confirmed the findings of the previous study³ with high contamination rates of up to 0.5 mg cyclophosphamide found on both the BD[®] and Terumo[®] syringe plungers.

Since both manufacturers, BD[®] and Equashield[®] have claimed to have made enhancements in the performance of their products, we asked Equashield[®] to sponsor a similar comparative study at our institution. Equashield[®] agreed and a small study was developed that would test the levels of contamination of the BD[®] syringes with Phaseal[®] CSTD devices against those from Equashield[®].

Method

The study included 11 Equashield[®] 60 mL syringe units and 12 BD Plastic[™] 60 mL syringes. The Equashield[®] syringes are a stand-alone closed system that includes factory built-in closed pressure equalization system and dry connectors. The BD[®] syringe is a traditional single use syringe with a luer lock tip manually attached to the appropriate Phaseal[®] dry connector (Injector). The closed pressure equalization system is built-in the Phaseal[®] vial adapter (Protector).

The difference between the BD[®] and the Equashield[®] syringes is shown in Figures 1 and 2. The BD syringes have an open syringe barrel and a regular four ribs plunger structure. The Equashield barrel is sealed by a lid and the plunger is a small

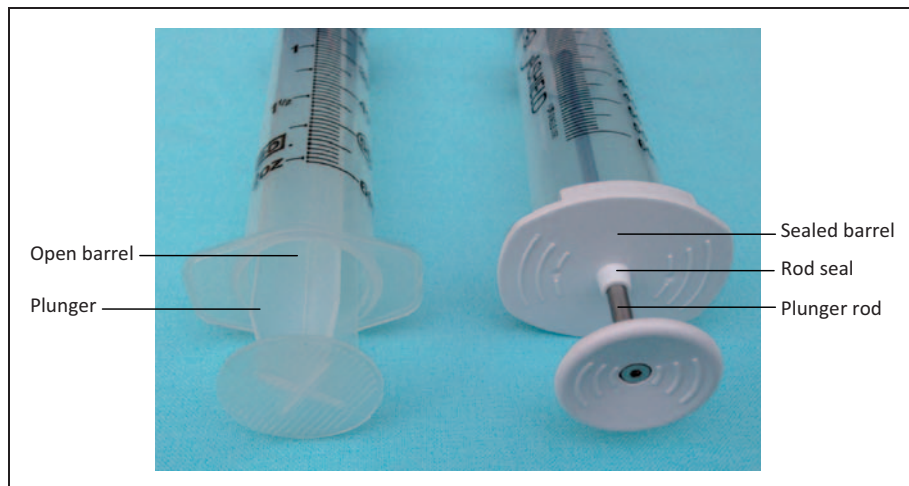


Figure 1. The BD[®] syringe (left) and the Equashield[®] syringe (right).

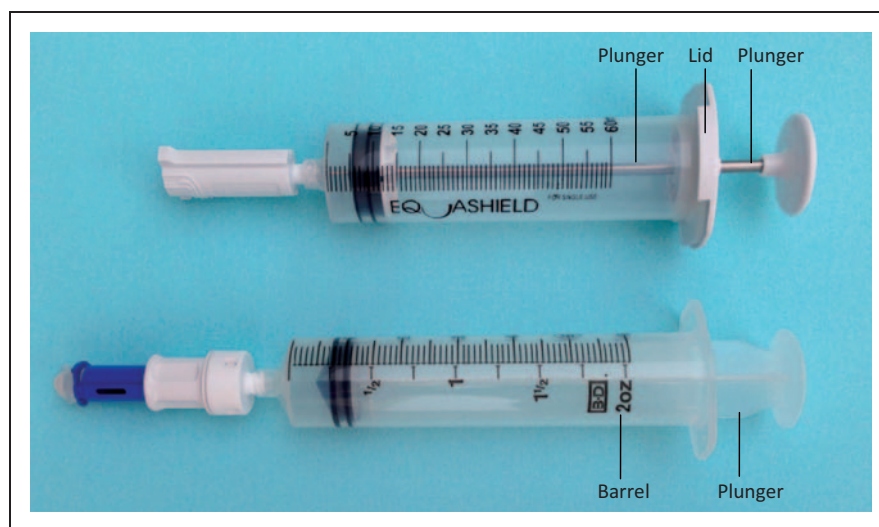


Figure 2. The Equashield[®] syringe (top) and the BD[®] syringe (bottom).

diameter metal rod that can move through the lid. A seal, seated in the center of the lid, seals the rod and ensures airtight operation of the syringe.

Four Equashield[®] Vial Adaptors (VA-20) and four Phaseal[®] Protectors (P-50) were attached to eight cyclophosphamide 2 g vials, respectively. Each vial was reconstituted with 100 mL of standard sodium chloride 0.9% solution to a final concentration of 20 mg/mL. There were eight syringes and adaptors utilized of each system to complete the transfer in 50 mL aliquots into the drug vials.

The syringes were divided into three equal groups for the Equashield[®] and BD[®] syringes, with a vial of the reconstituted cyclophosphamide designated for each group with the exception of the last group which received 2 vials each. A 50 mL aliquot of cyclophosphamide was drawn into each syringe and then injected back into the cyclophosphamide vial. This drug transfer procedure was immediately repeated twice for the syringes in group 1, four times for the syringes in group 2, and eight times for the syringes in group 3. Only 50 mL were drawn into the syringes to remain within the manufacturers' guidelines of use and minimize the potential for a possible spill. The same withdraw and reinjection processes were applied to the syringes which were similar to those one would encounter during a routine pharmacy compounding procedure.

After the completion of the drug transfers with the Equashield[®] and BD[®] Phaseal syringes, the plungers were retracted back to the nominal syringe marking and a wipe test of the exposed plunger was done.

A wipe sample was taken from the biological safety cabinet work surface at the commencement of the study to rule out any possible contamination prior to the study. The size of the wiped surface was 1 ft² (930 cm²).

The services of ChemoGlo[™] (Chapel Hill, North Carolina), a specialized third-party laboratory, were used to accurately quantify trace amounts of cyclophosphamide on the syringe plungers and work area sample. The ChemoGlo[™] assay has a low detection level of 10 ng (1×10^{-9}) per wipe sample and is simple to use. The assay is optimized for wipe sampling of any surface area up to 1 ft² (930 cm²), which is optimal for wiping the smaller surface of the syringe plungers. The quantification of cyclophosphamide is, therefore, the total quantity of cyclophosphamide in nanograms found on a plunger/wipe sample.

Four kits were utilized for a total of 24 wipe samples (each kit consisting of six wipes samples) which were completed in accordance to the procedures outlined by ChemoGlo[™].

The wipe samples were taken using the ChemoGlo[™] swab with absorbed solution. The plungers were retracted back to the nominal syringe

marking and the exposed plungers wiped thoroughly with the wet swabs. After the completion of the wipe sampling, the swab was placed in a dedicated labeled container. Since each wipe sample consists of two swabs and solution containers, this process was repeated for the secondary swab sampling. All 48 containers with the wipe samples (two containers for each syringe \times 23 syringes, and two containers for testing the work surface) were sent overnight to ChemoGlo[™] laboratory for the performance of sample extraction and analysis with LC-MS/MS technology.

The test was performed in a Thermo Class II, A2 Biological Safety Cabinet by an experienced chemotherapy-certified pharmacy technician, proficient with the use of both the Equashield[®] and Phaseal[®] CSTDs. The working area was cleaned in accordance to our facility's standard procedure prior to initiation of the study. To isolate the study and exclude any foreign source of contamination that may influence the results, the drug vials were cleaned with IPA pads and only materials which are required for the study were kept in the hood. Large absorbent pads were used to cover the whole work area. The pads were replaced and the gloves changed before working with each group of syringes.

Results

Results demonstrated significant cyclophosphamide contamination levels on 11 out of 12 BD[®] syringes, whereas all 11 Equashield[®] CSTDs had undetectable concentrations. The 1 ft² (930 cm²) work area wipe showed minor contamination of 16.82 ng, considered to be close to the lower limits of detection level (LLQ) (Table 1).

Statistical assessment

We regard this study to be a small-scale pilot study with the intent of reviewing the two CSTDs that we were familiar with. We had little preliminary data to determine the study's sample size; therefore, an assumption of 11 syringes was made based on previous studies.^{3,4} The results confirmed the assumption and show that the average contamination level for the BD[®] plungers was $\mu = 1622$ ng with a variant, $\sigma^2 = 331$ ng². Assuming a normal distribution, $CP \sim N(\mu, \sigma^2)$, the average contamination level on the BD plunger was greater than 1228 ng, with a confidence level of 95%. That is to say, that if we used an unlimited number of syringes, we could be 95% sure that the averaged contamination level would be above 1228 ng. Since the technology is limited to detect and quantify between 10 ng and 2000 ng, for the statistical analysis of the results, we assumed that when the contamination was above the

technology's detection limit, we regarded it to be 2000 ng understanding that the true level of contamination may exceed that value several-fold. This has already been documented in previous studies^{4,5} using HPLC-MS/MS analysis method (Figure 3).

Table 1. Amounts (ng) of cyclophosphamide on the tested syringe plungers.

Syringe	Equashield®	BD®	Drug transfer cycles
1	ND	>2000	2
2	ND	1687.05	
3	ND	>2000	
4	ND	1021.98	
5	ND	753.89	4
6	ND	>2000	
7	ND	>2000	
8	ND	>2000	
9	ND	>2000	8
10	ND	>2000	
11	ND	>2000	
12	NA	ND	
Mean	ND	>1621.91	

The lower limits of detection (LLQ) for these assays are 10 ng. Quantities that are less than the LLQ are defined as non-detectable (ND). The upper limits of detection for these assays are 2000 ng. Quantities that are greater than 2000 ng are defined as >2000.

Discussion

The contamination levels found on the standard BD® syringe plungers confirm previous studies.^{3,4} This contamination highlights the potential of a significant source of low-level exposure for healthcare workers while they prepare and handle hazardous drugs during their routine workday. It is suggested that the staff's gloves come into contact with the syringe's contaminated plungers then in turn, touch other surfaces such as the work area, the prepared IV bags which are distributed to patient care areas, and so forth, thus contaminating the entire work environment and increasing the potential of exposure.

Following the results of previous study,⁴ where contamination was also found on tested Terumo® syringes, it is most likely that BD® syringes generally represent standard syringes of other manufacturers as well. Furthermore, the contamination on standard plungers is expected regardless of use of a CSTD or traditional methods when handling hazardous drugs.

Similarly, our results demonstrated no detectable level of contamination on the Equashield® syringe plungers which supports previous findings^{3,4} as well as the NIOSH recommendations² that endorse the use of CSTD which mechanically prohibits the escape of hazardous drug or vapor concentrations outside the system in order to minimize exposure to hazardous drugs.⁶

We believe that cyclophosphamide infiltrates on to the plungers of standard BD® syringes by reacting and creating a layer on the inner walls of the syringe barrel.

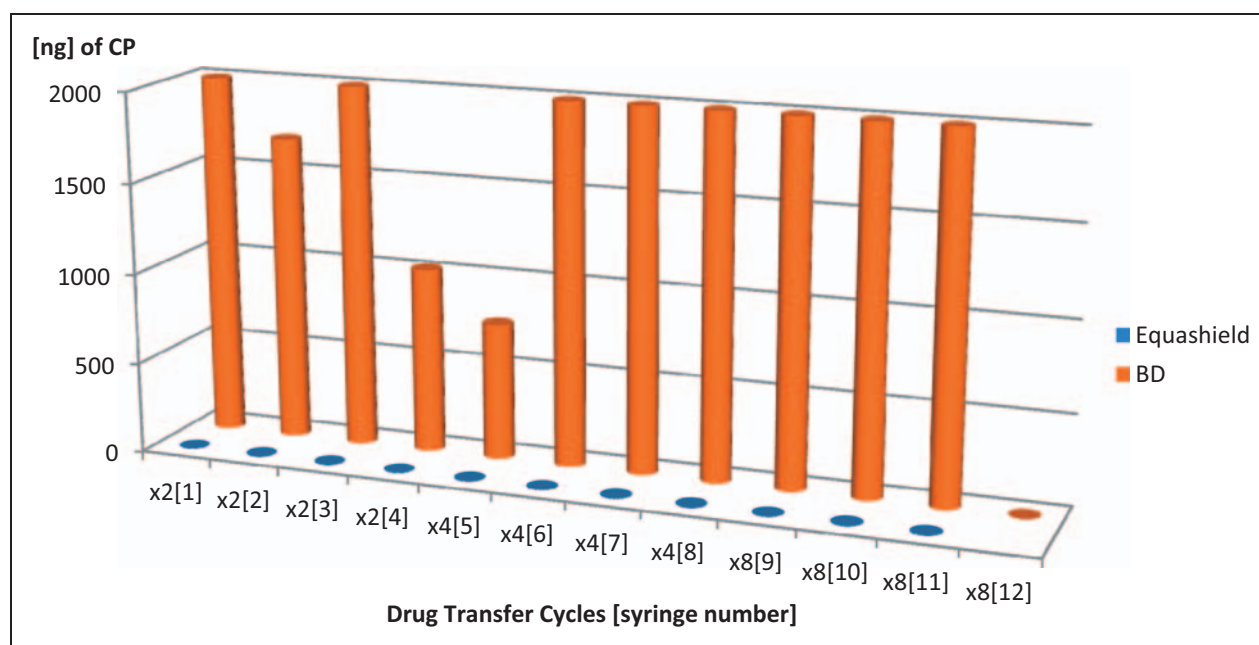


Figure 3. Contamination levels (ng) of cyclophosphamide (CP) on the tested syringe plungers.

The very minimal distance or direct contact between the plungers to the contaminated walls “allows” cyclophosphamide to ease its way on to the plunger. The typical squeezing of the barrel, bending or twisting of the plunger during real use conditions often creates a direct contact between plungers to the contaminated walls, thereby allowing transfer of contamination. It has been shown that the safety measures adopted through the Equashield® design address the risk of plunger contamination⁷ by preventing contact and ensuring greater distance between the Equashield® plunger rod and the syringe barrel in this contained CSTD.

Finally, the contamination levels of cyclophosphamide found on the work area sample were close to the LLQ and may therefore be considered of little consequence.

Conclusions

This study has confirmed the hazards associated with standard syringes and the importance of using appropriate closed system syringes during all preparation and handling stages of hazardous drugs, in order to significantly reduce healthcare workers' exposure to contaminated surfaces and work environments. It is suggested that in light of this study, and the medical literature which it echoes, further investigation and consideration are required, and more rigorous regulations and policies should be established in this area in order to further minimize risks and optimize the safety of healthcare workers.

Funding

This study was partially sponsored by Equashield.

Conflict of interest

The authors have no conflict of interest to disclose.

References

1. United States Pharmacopeia. *USP<797> Guidebook to pharmaceutical compounding – sterile product preparations*. Rockville, MD: United States Pharmacopeial Convention, 2012.
2. National Institute for Occupational Safety and Health Alert. *Preventing occupational exposures to antineoplastic and other hazardous drugs in healthcare settings*. DHHS (NIOSH) Publication No. 2004-165. Atlanta, GA: US Department of Health and Human Services, Public Health Service, Centers for Disease Control and Prevention, National Institute for Occupational Safety and Health, 2004.
3. Favier B, Gilles L, Latour JF, et al. Contamination of syringe plunger during the sampling of cyclophosphamide solutions. *J Oncol Pharm Practice* 2005; 11: 1–5.
4. Kiffmeyer TK. *Comparative study of syringe contamination by hazardous drugs*. Duisburg, Germany: Institute of Energy and Environmental Technology, 2010.
5. Tuerk J, Kiffmeyer TK, Hadtstein C, et al. Validation and application of an LC-MS/MS procedure for environmental monitoring of cytostatic drugs. *Int J Environ Anal Chem* 2001; 91: 1178–1190.
6. Kiffmeyer TK, Kube C, Opiolka S, et al. Vapor pressures, evaporation behavior and airborne concentrations of hazardous drugs: implications for occupational safety. *Pharmaceut J* 2002; 268: 331–337.
7. Olivier LC, Kendoff D, Wolfhard U, et al. Modified syringe design prevents plunger-related contamination—results of contamination and flow-rate tests. *J Hosp Infect* 2003; 53: 140–143.